

ATLAS.ti 7.0

Preview



Software for qualitative data analysis,
management, and model building.

ATLAS.ti 7 is only a few months away, its release scheduled for early 2012. Time to take a more in-depth look at what is coming your way. There are many reasons to look forward to this next milestone in professional qualitative data analysis. The guiding principles for the development of version 7 can be described as centered around increased usability, streamlined productivity, and, as always, innovative new functionality.

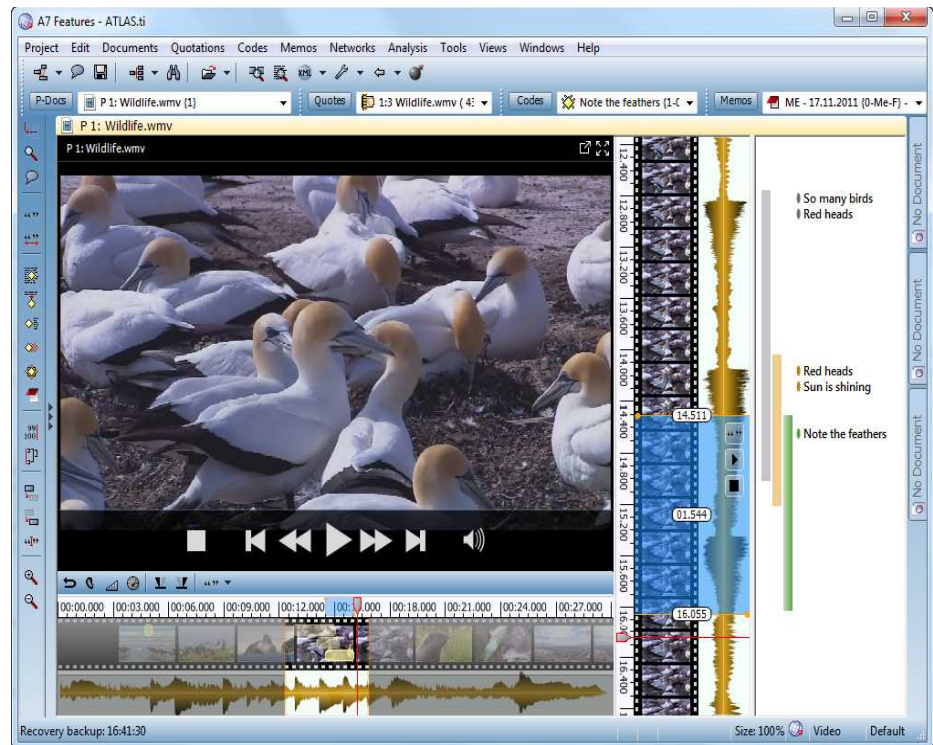
A few of the most noticeable changes are featured below.

New Multimedia Framework.....	3
Multi Document View.....	4
New GUI Features: Side Panels.....	5
Network Views Reloaded.....	6
Clouds.....	9
Managed Documents.....	10
Metadata Exploitation.....	11
XML Converter	11
Improved Image Selection.....	12
Even Easier Installation and Updating	12

(All features subject to change or modification.)

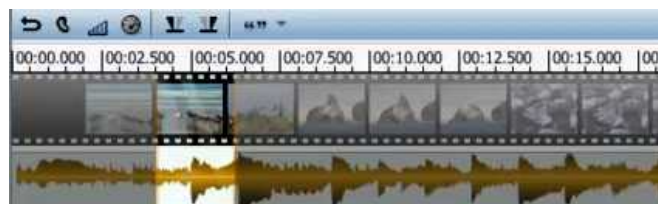
New Multimedia Framework

ATLAS.ti 7 now gives you detailed access and a frame-level preview of video files.



New Multimedia engine: Create PDs frame-level work for in-depth scene coding and multi-dimensional analysis. All codes display in the margin area – just as nature intended!

For each multimedia file you get full frame-by-frame preview and a zoomable display of the audio wave form. Navigation is highly precise.



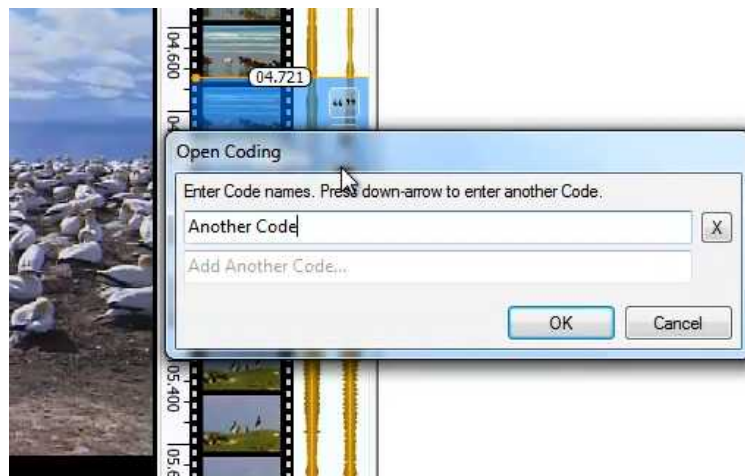
High-precision navigation is a must for in-depth media analysis.

Videos can be displayed in the main program window, or flown out in a separate window for optimal viewing and use of the work area.

Most importantly, audio and video now share ATLAS.ti's central metaphor for presenting and working with content: the margin area. Text, PDF, images, audio, video – all utilize the same powerful workspace, arguably the most natural "work environment" for the qualitative researcher.

Multimedia quotations can be treated exactly like text passages: They have a full-fledged margin area for coding, linking and commenting. Codes are displayed where you would expect them, right next to the quotation segment.

Simplified entry of code labels : An additional field opens automatically to enter multiple codes if desired.



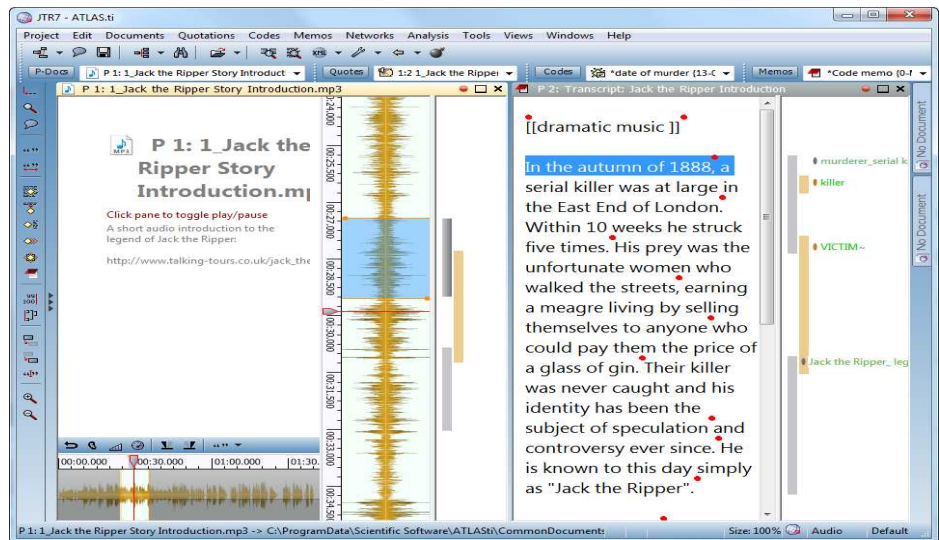
Coding works just like you're used to from text documents - in the margin area.

When entering a code name, a list of already existing code names that start with the same letter or letter sequence is displayed for swift and accurate coding.

Multi Document View

You can now load up to four documents into the new HU editor document regions for simultaneous viewing.

Automatically load corresponding documents (such as transcripts) in parallel next to one another and display them in sync. For example, play a segment from a video by marking it in the transcript, and vice versa.



One document is not enough - work with up to four simultaneously, including margin area for each.

Display the regular margin area along with the loaded documents and code in either document. You can also create direct hyperlinks between the multiple documents, right on the same screen.

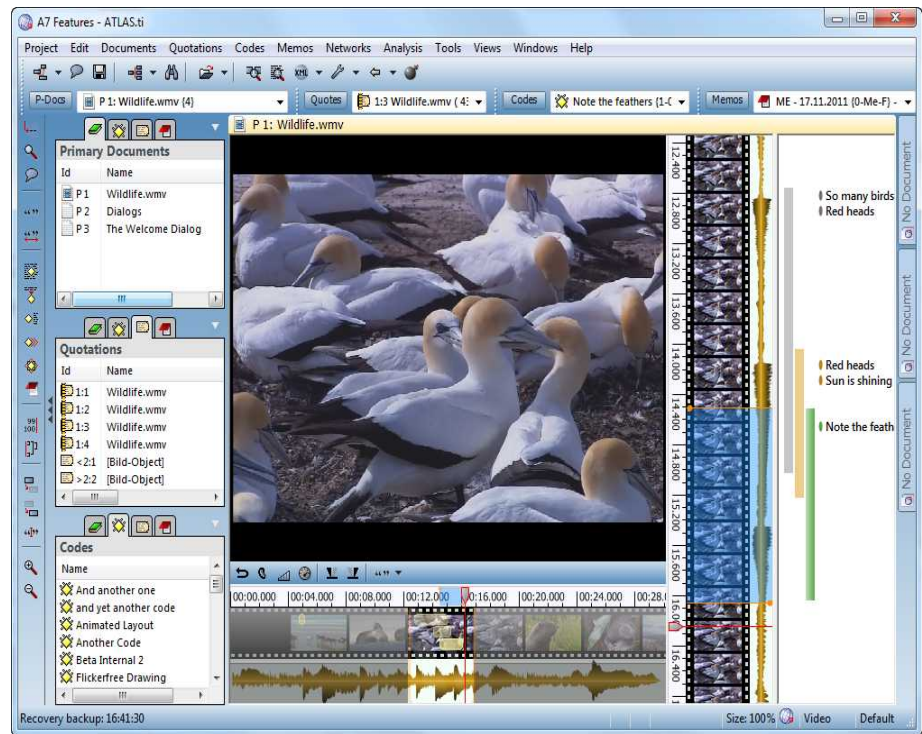
Comparing different document versions, different manifestations of the same phenomenon, or multiple sources of a common theme is a breeze.

You can open and work on up to four different documents of any type at once in this way. This opens up fantastic new possibilities for all kinds of comparative work.

New GUI Features: Side Panels

The ATLAS.ti user interface has undergone numerous subtle but extremely usability-enhancing changes. These changes will increase your productivity but still let you get to work without interrupting your work flow.

New interactive side panels let you maximize the available workspace while giving you immediate access to preselected lists of objects at all times. Have all your tools where you need them - but only when you need them.

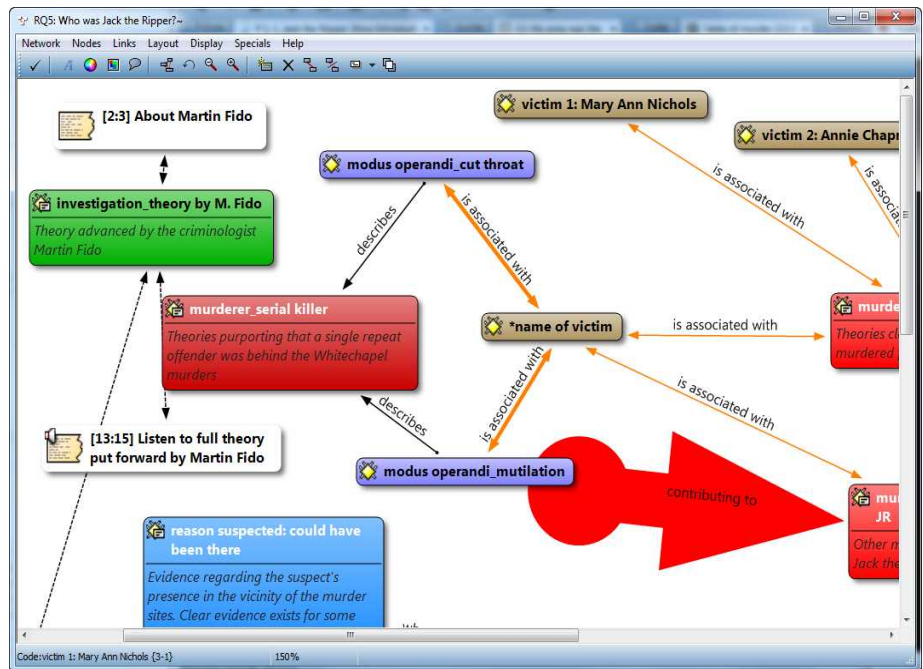


On-screen real estate is always at a premium when conducting professional research. Intelligent and flexible use of screen space through collapsible panels is the answer.

Panels can be minimized and resized, and be used for any purpose, such as coding, creating hyperlinks, and access management to your primary documents. They can be displayed "on the fly" or docked for permanent use.

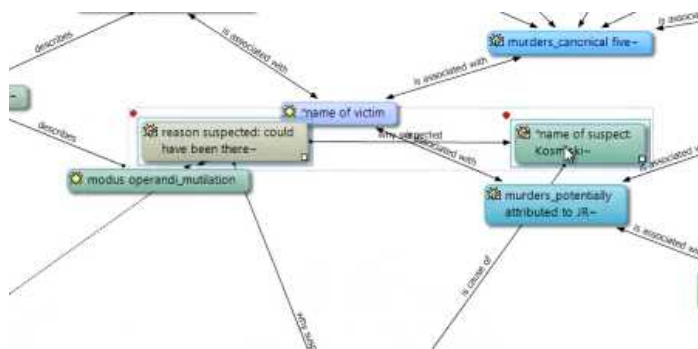
Network Views Reloaded

ATLAS.ti's semantic network views have been drastically improved, both visually and functionally.



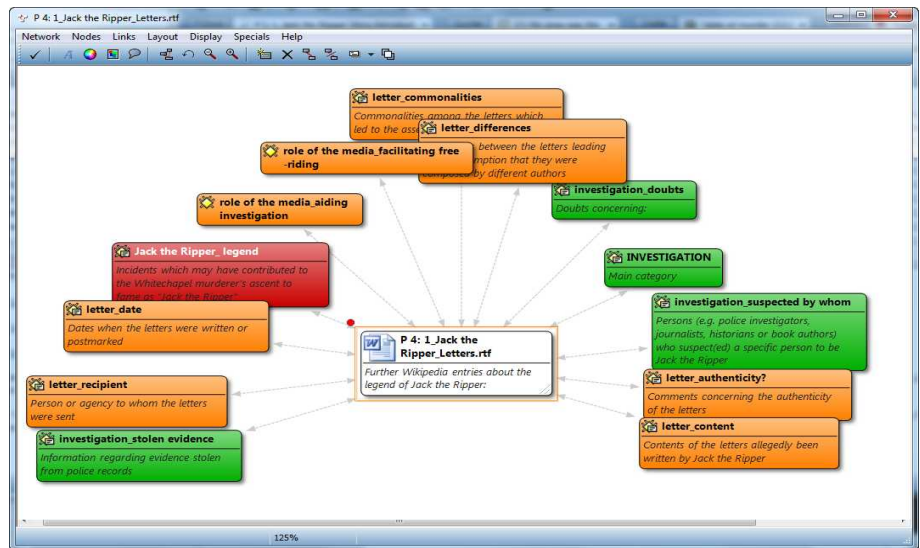
Clear and intelligent visualization of complex scenarios is a must. Projects benefit from the new and powerful network view engine.

Nodes can now be dragged with full view and zoomed flicker-free to any depth.



Network views are ever more a powerful, closely integrated work tool. It doesn't hurt that they're now pretty, too.

Dedicated connection handles let you create semantic hyperlinks right in the graphic view.



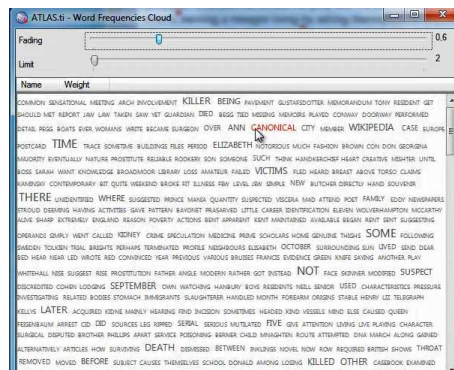
Get the full picture at just once glance - all codes associated with a document.

Of course, all networks can be printed in high quality or saved as a high-resolution image file.

Clouds

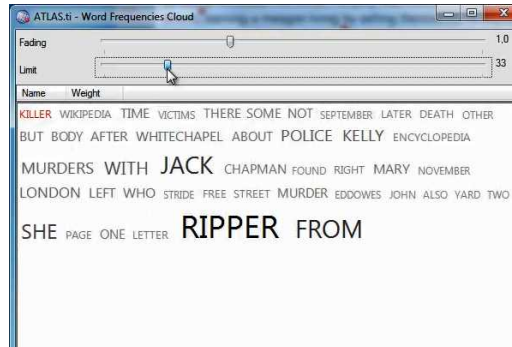
The use of clouds is another new feature in ATLAS.ti 7. A staple of many Web applications and already available as an output format since v. 5, ATLAS.ti 7 now integrates cloud views seamlessly into the program core.

The Word Cruncher can display word frequencies as a Word Cloud to make for quick, intuitive work flow.



Word crunching made easy. Gain a full overview of word frequencies at a single glance.

Faders let you control the display of word frequency and select a cut-off for words you want filtered out.



Reduce or expand your selection intuitively with a slider. Filter and auto-code for interesting terms all in one go.

You can then directly code your documents for the selected words. This is another significant improvement to increase the work flow and make for fast and intuitive control over large amounts of data.

Managed Documents

ATLAS.ti 7 provides fast, flexible and secure document management through Managed Documents. This powerful new concept ensures referential and content integrity to make users' life easier.

You now have a choice if you want to keep your project files stored in their original location (as before) or if you want ATLAS.ti to handle all document management tasks for you, safely and securely. The managed document concept also includes a "public library" that contains shared material for collaborative work.

This sophisticated document management also gives you increased performance (through one-time doc->rtf conversion), revision management, and optional metadata import (e.g., comments, tags).

You can retain the project document structure you're used to, or convert your HUs from previous program versions to managed docs.

Metadata Exploitation

If your document contains internal metadata, ATLAS.ti extracts them automatically and uses them appropriately by creating families or comments for your objects.

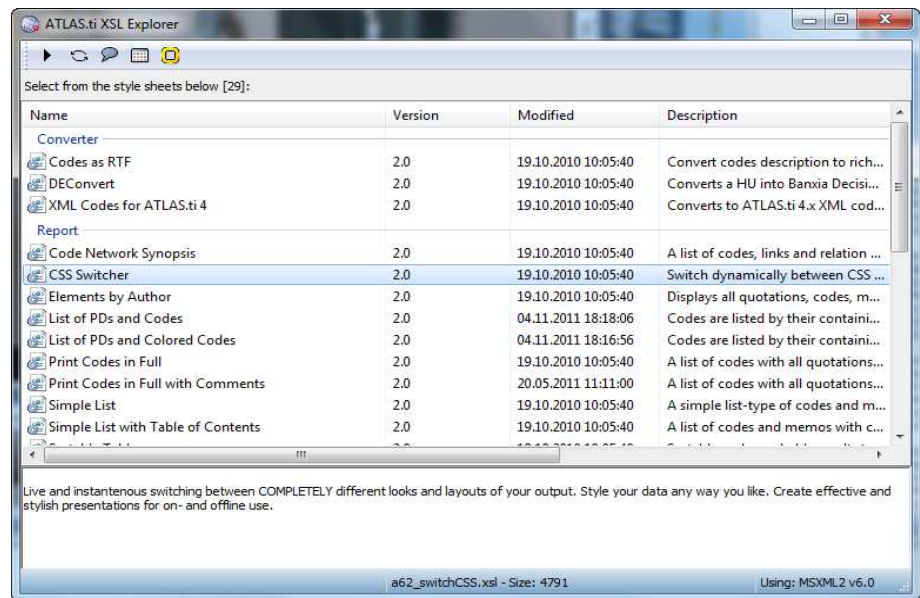


Extracting available meta data

Import audio files, videos, PDF or Word documents--or an entire music collection. Available meta data (such as ID3 tags or other document property information) is immediately put to productive use. This saves time and lets you re-use work that has already been performed when cataloging your files.

XML Converter

The XML Converter has undergone a major revision to increase usability and to allow for long-term expandability.

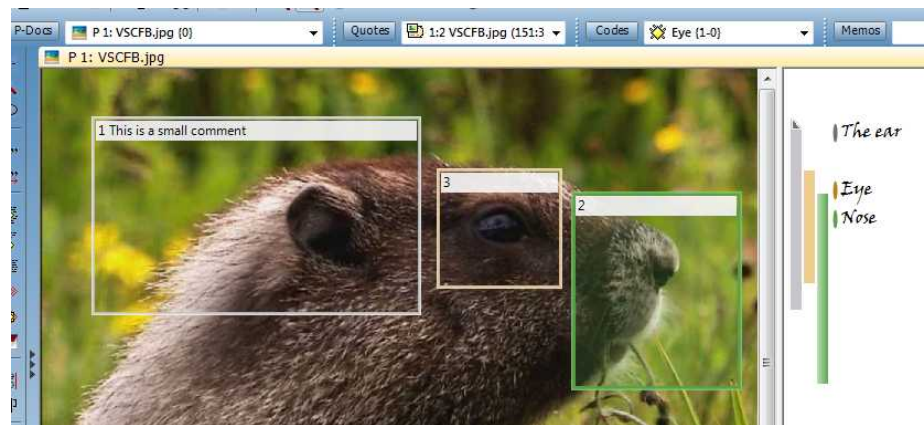


The XML Converter revised for one-click operation

Improved Image Selection

When working with image PDs—including images extracted from videos in the new multimedia framework—users will enjoy increased flexibility, usability, and functionality.

Existing selections can now be freely moved and resized. Selection frames correspond in color to the color of their quotation bar in the margin area and display existing comments.



Analyze images (including stills from videos) in depth

In connection with the new multimedia framework this facilitates powerful in-depth analysis of video clips at the frame level.

PDF documents and images can now be printed complete with their margin area. Image segments are now included even in RTF exports.

Even Easier Installation and Updating

System administrators will appreciate new support for silent/unattended installations. Service packs and updates can now be deployed via .msi installer—a huge plus for large pool installations.